

BIKEBOTIX

SOLUTIONS IN MOTION



WHEEL BUILDING



MOTORCYCLE WHEEL BUILDING



RIM MANUFACTURING



BIKE ASSEMBLY



BIKE TOOLS



DATA MANAGEMENT



**PRODUCT
CATALOG
2025-26**

Solutions en mouvement

Solutions in motion

Fort de plus de 50 ans d'expérience, Mach1 Machinery a laissé place à Bikebotix pour vous proposer une offre encore plus complète.

Expert de la roue rayonnée de vélo et de moto, Bikebotix accompagne les plus grands acteurs du secteur. De l'entrée de gamme jusqu'au haut de gamme et de la petite à la grande série, Bikebotix est à même de vous proposer les solutions les mieux adaptées à votre besoin.

Fier d'être un acteur majeur et un partenaire de référence, Bikebotix exporte à travers le monde des solutions qui reposent sur 4 fondamentaux : INNOVATION, PERFORMANCE, FIABILITÉ et FLEXIBILITÉ.

With more than 50 years of experience, Mach1 Machinery has given way to Bikebotix to offer you an even more comprehensive offer.

Expert in spoked bicycle and motorcycle wheels, Bikebotix supports the biggest players in the sector. From entry-level to high-end and for small or large series, Bikebotix is able to offer you the solutions best suited to your needs. Proud to be a major player and a reference partner, Bikebotix exports worldwide solutions based on 4 fundamentals: INNOVATION, PERFORMANCE, RELIABILITY and FLEXIBILITY.

Aux côtés des équipes de développement et de support client expertes et hautement qualifiées, 5 domaines d'expertise.

Alongside expert and highly qualified development and customer service teams, 5 areas of expertise.



WHEEL BUILDING



MOTORCYCLE WHEEL BUILDING



RIM MANUFACTURING



BIKE ASSEMBLY



DATA MANAGEMENT



BIKE TOOLS

SUMMARY

RHF 4

LTS 6

ALT 7

AFT2 8

AFT4 9

AFT2A 10

AFT4A 11

V4IA 12

MAT 13

TRT 14

PNA 14

RAM 16

V4TM 17

MD2M 17

PF-BU 19

PCU 19

APPM 2 20

MPPM 20

DRIM 21

DRIM A 22

EFM 23

SAL 24

BAC 26

BIKEPRO MOBIL 26

EZT2 28

EZL 29

EZTF 30

STM 30

OMT 31

SCT 31

WPA 32



RHF

ROBOTIZED HUB FILLER - ROBOT DE REMPLISSAGE DE MOYEUX



Thanks to its robotized arm, RHF is able to support almost any kind of hub and especially E-hubs. It is able to fill hubs that are even difficult to process manually as it can align flanges holes with spokes in a fast, precise and possibly complex movement. Better than any human and it keeps such efficiency all along the day. Standard loading/unloading is on a turntable at front face. Alternative loading/unloading solutions such as slides or dispensers are available to accommodate with your own wheel building line layout and workforce organisation in the most efficient way.

SPECIFICATIONS

- Payload : 3.5kg, option 6kg
- Production capacity : 80 to 100 hubs/hour (36 spokes)
- Working air pressure : 6 bars - 90 PSI
- Air consumption : 5 liters/min
- Electrical : 230 V - 1000 VA
- Sound level : <70 dB
- Weight : 900 Kg
- Size : 2.20 x 2.70 x 1.85m
- CE

OPTIONS

- Hub loading at back side
- Control light

TECHNICAL FEATURES

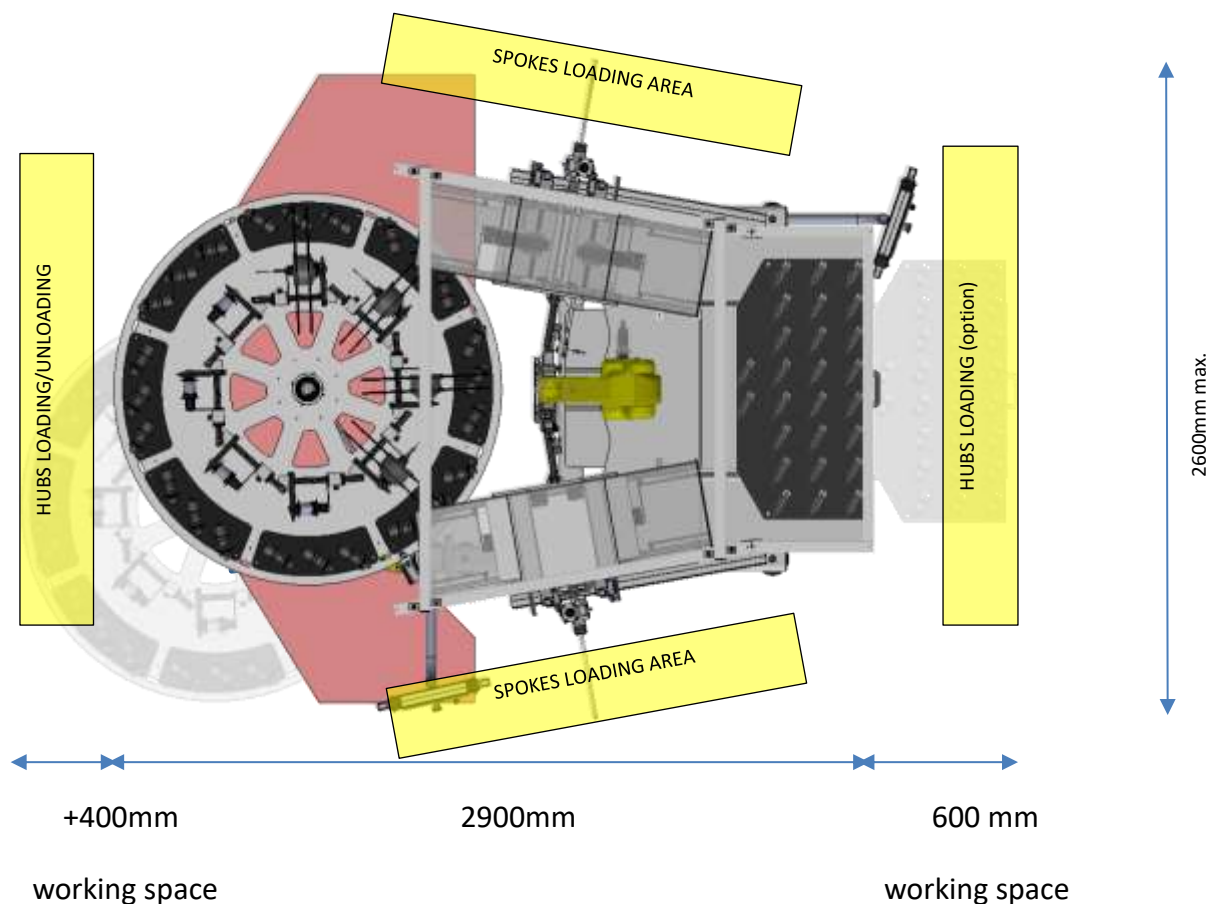
Robotized arm : **Fanuc LR Mate 200iD7L**.

4 spokes dispensers (possibly 4 different spoke sizes) with **1000 spokes capacity**

Spoke length : **from 100mm to 300mm**

Hubs supported : all regular hubs and e-hubs with round perimeter flanges with cable through axel or not.

Limitation : straight-pull spoke hubs and very unusual hubs



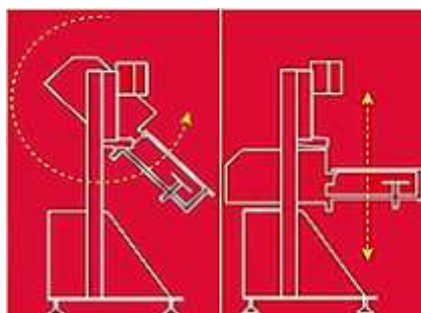
LTS

SIMPLE SPOKE LACING & TIGHTENING MACHINE - MACHINE DE RAYONNAGE ET VISSAGE SIMPLE



SPECIFICATIONS

- Range : 12" to 29"
- Manual but fast rim change-over
- Production capacity : 50 wheels/hour mini
- Air pressure : 6 bars – 90 PSI (50 liters/min)
- Electrical : 230 V - 600 VA
- Sound level : <70 dB
- Weight : 275 kg
- Size : 1.4 x 0.90 x 1.85 m*
- CE



*adjustable working position

OPTIONS

- Second nipple feeding bowl
- Fat wheel design
- High speed lacing
- E-hub clamp
- Washer feeder
- Radial angle alignment
- Fragile rim protection

MAIN FEATURES

- Easy and fast manual changeover to process the widest range of rims
- Manual head angle and height adjustment for ergonomic lacing position
- Industry 4.0 compliant

BENEFITS

- Improved lacing speed for efficient wheel building
- Reduced cost of ownership

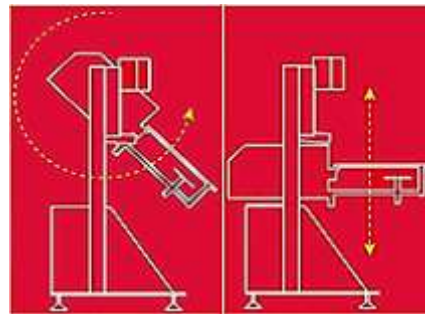
ALT

AUTOMATIC LACING & TIGHTENING MACHINE - MACHINE DE RAYONNAGE ET VISSAGE AUTOMATIQUE



SPECIFICATIONS

- Range : 12" to 29"
- Zig-zag supported up to 30mm
- Production capacity : 60 wheels/hour mini
- Air pressure : 6 bars – 90 PSI (50 liters/min)
- Electrical : 230 V -1000 VA
- Sound level : <70 dB
- Weight : 330 kg
- Size : 1.4 x 0.90 x 1.85 m*
- CE



*adjustable working position

OPTIONS

- Second nipple feeding bowl
- E-hub clamp
- Washer feeder
- Radial angle alignment
- Software for special wheels

MAIN FEATURES

- Automatic rim change-over (24" to 29", otherwise semi-automatic)
- Head angle and height adjustment for ergonomic lacing position
- Operators management and production tracing
- Industry 4.0 compliant

BENEFITS

- Improved lacing speed for efficient wheel building
- High performance lacer with tracing capability

AFT2

ADVANCED FAST TRUING ROBOT WITH 2 WRENCHES - ROBOT DE DÉVOILAGE AVANCÉ À 2 CLÉS



SPECIFICATIONS

- Range : 12" to 29"
- Semi-automatic changeover
- Production capacity : 50 wheels/hour for tightening-stabilization-truing
120 wheels/hour truing only (as per user and tolerance)
- Working air pressure : 6 bars - 90 PSI
- Air consumption : 7 liters/min
- Electrical : 230 V - 1800 VA
- Sound level : <70 dB
- Weight : 475 Kg
- Size : 1.10 x 1.15 x 1.65m
- CE

OPTIONS

- Integrated system of stabilization
- Electric hub special clamp
- FAT Wheel kit for rim width up to 100mm

MAIN FEATURES

- Control system with 10.000 wheel recipes
- User programmable wheel processing in up to 8 steps
- Automatic adaptation to diameter by selecting the wheel card from the wheel list
- Display actual values for side/side, up/down and offset values by direct measurement on the wheel
- Quick adjustment (no tools required) of key height, spacing and tilt
- Later upgrade to AFT4 possible
- Industry 4.0 compliant

BENEFITS

- Highly efficient and versatile
- Easy maintenance with reduced costs thanks to the use of standard commercial components

AFT4

ADVANCED FAST TRUING ROBOT WITH 4 WRENCHES - ROBOT DE DÉVOILAGE AVANCÉ À 4 CLÉS



SPECIFICATIONS

- Range : 12" to 29"
- Semi-automatic changeover
- Production capacity : 65 wheels/hour for tightening-stabilization-truing
120 wheels/hour truing only
(as per user and tolerance)
- Working air pressure : 6 bars - 90 PSI
- Air consumption : 10 liters/min
- Electrical : 230 V - 3000 VA
- Sound level : <70 dB
- Weight : 495 Kg
- Size : 1.10 x 1.15 x 1.65m
- CE

OPTIONS

- Integrated system of stabilization
- Electric hub special clamp
- FAT Wheel kit for rim width up to 100mm

MAIN FEATURES

- Control system with 10.000 wheel recipes
- User-programmable wheel processing in up to 8 steps
- Automatic adaptation to diameter by selecting the wheel card from the wheel list
- Display of actual values for side/side, up/down and offset values by direct measurement on the wheel
- Quick adjustment (no tools required) of keys height, spacing and tilt
- Industry 4.0 compliant

BENEFITS

- Highly efficient and versatile
- Quick tightening with 4 keys to increase the number and/or quality (progressive tightening) of wheel produced
- Easy maintenance with reduced costs thanks to the use of standard commercial

AFT2A

ADVANCED FAST TRUING ROBOT WITH 2 WRENCHES AND AUTOMATIC CHANGEOVER - ROBOT DE DÉVOILAGE AVANCÉ À 2 CLÉS ET À CHANGEMENT DE SÉRIE AUTOMATIQUE

SPECIFICATIONS

- Range : 12" to 29"
- Automatic changeover
- Production capacity : 50 wheels/hour for tightening-stabilization-truing
120 wheels/hour truing only
(as per user and tolerance)
- Working air pressure : 6 bars - 90 PSI
- Air consumption : 7 liters/min
- Electrical : 230 V - 1800 VA
- Sound level : <70 dB
- Weight : 495 Kg
- Size : 1.10 x 1.15 x 1.65m
- CE

OPTIONS

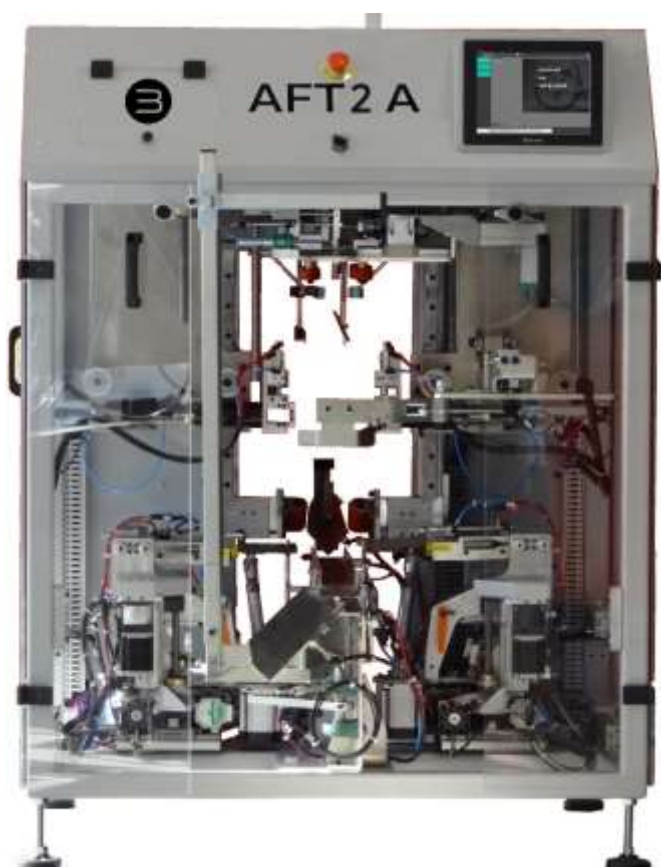
- Integrated system of stabilization
- Electric hub special clamp
- FAT Wheel kit for rim width up to 100mm
- Automatic wheel recognition by RFID tag
- Bar code reader for wheel changeover

MAIN FEATURES

- Control system with 10.000 wheel recipes
- User-programmable wheel processing in up to 8 steps
- Automatic adjustment to wheel diameter and to the horizontal and vertical position of the keys
- Display actual values for side/side, up/down and offset values by direct measurement on the wheel
- Quick adjustment (no tools required) of key height, spacing and tilt
- Industry 4.0 compliant

BENEFITS

- Highly efficient and versatile
- Easy maintenance with reduced costs thanks to the use of standard commercial components



AFT4A

ADVANCED FAST TRUING ROBOT WITH 4 WRENCHES AND AUTOMATIC CHANGEOVER - ROBOT DE DÉVOILAGE AVANCÉ À 4 CLÉS ET À CHANGEMENT DE SÉRIE AUTOMATIQUE



SPECIFICATIONS

- Range : 12" to 29"
- Full automatic changeover
- Production capacity : 65 wheels/hour for tightening-stabilization-truing
120 wheels/hour truing only
(as per user and tolerance)
- Working air pressure : 6 bars - 90 PSI
- Air consumption : 10 liters/min
- Electrical : 230 V - 3000 VA
- Sound level : <70 dB
- Weight : 495 Kg
- Size : 1.10 x 1.15 x 1.65m
- CE

OPTIONS

- Integrated system of stabilization
- Electric hub special clamp
- FAT Wheel kit for rim width up to 100mm
- Automatic wheel recognition by RFID tag
- Bar code reader for wheel changeover

MAIN FEATURES

- Control system with 10.000 wheel recipes
- User programmable wheel processing in 8 steps
- Automatic adjustment to wheel diameter and to the horizontal and vertical position of the key
- Display actual values for side/side, up/down and offset values by direct measurement on the wheel
- Quick adjustment (no tools required) of key height, spacing and tilt
- Industry 4.0 compliant

BENEFITS

- Highly efficient and versatile
- High-speed tightening thanks to the 4 wrenches => increased throughput or quality
- Easy maintenance with reduced costs thanks to the use of standard commercial components

V4IA

SEMI-AUTOMATIC 4 HEAD TIGHTENING MACHINE - MACHINE SEMI-AUTOMATIQUE DE VISSAGE 4 TÊTES



SPECIFICATIONS

- Range : 16" to 29"
- Production capacity : 100 - 130 wheels/hour
- Working air pressure : 6 bars - 90 PSI
- Air consumption : 50 liters/min
- Electrical connection : 3X400V+N – 1800VA
- Sound level : <70 dB
- Weight : 780 Kg
- Size : 2.20 x 1.60 x 2.20m
- CE

OPTIONS

- Range 12", 14"
- Security by electronic barrier
- MES interface

MAIN FEATURES

- 4 head tightening machine for fast, accurate and balanced tightening of all spokes
- Manual loading/unloading
- Automatically tightens front and rear wheels to defined tightening torques and predefined number of turns : no loose spoke on output controlled with brushless motors
- Fast tooling replacement and set-up with automatic adjustment of hub and flange position
- New control system with management of recipes on wheels
- Industry 4.0 compliant

BENEFITS

- High productivity and reduced maintenance
- Constant and high-quality wheel very independent from lacing process and variability of components in use

MAT

MANUAL ADVANCED TRUER : DIGITAL ASSISTED BENCH FOR HAND TRUING & CONTROLING –BANC MANUEL DE DÉVOILAGE AVANCÉ

THE 4 WHEEL METRICS

Side / Side	0.05
Up / Down	0.05
OFFSET	0.05
TENSION	1.00 kg

FWC Full Wheel Control

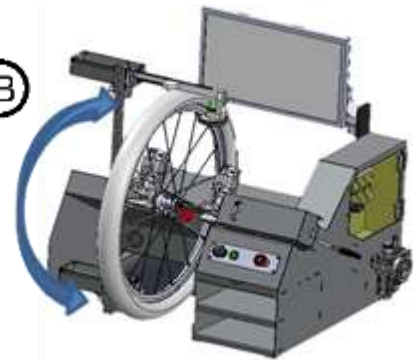
±0.025^{mm}

SPECIFICATIONS

- Range : 14" to 29"
- With or without tire
- Air pressure : 6 bars – 90 PSI (5 l/min)
- Electrical : 230V - 200 VA
- Sound level : <50 dB
- Weight : 120 kg
- Size : 1.00 x 0.80 x 1.20m
- CE

Adjustable working position

ERG



OPTIONS

- Tension meter – wired or Bluetooth
- Wheel metrics label Printer
- Stabilization (CAS)
- Spoke calibration tool
- Height adjustable chassis

MAIN FEATURES

- Versatile, high-precision machine ($\pm 0.025\text{mm}$)
- Real-time display of defect values, jump curves, and offset curves
- Quick series changeover without tools
- Intuitive software enables all types of operator to become efficient
- Data logging of all wheels processed for traceability purposes
- Industry 4.0 compliant

BENEFITS

- High end wheel building performance
- Quality tracing

BIKEBOTIX
SOLUTIONS IN MOTION



TRT

TUBELESS RIM TAPER - POSE DE FOND DE JANTE TUBELESS

new



SPECIFICATIONS

- Range : 20" to 32" (700c)
- Production capacity : 120 wheels/hour depending on cycle settings
- Working air pressure : 6 bars - 90 PSI
- Air consumption : 13 liters/min
- Electrical : 230V - 400 VA
- Sound level : <70 dB
- Weight : 180 Kg
- Size : 0.80 x 0.80 x 1.70m
- CE

OPTIONS

- Additional set of rollers
- Vulcanised rollers
- Additional tape roll

PNA

TYRE FITTING MACHINE – MACHINE DE MONTAGE DE PNEU



SPECIFICATIONS

- Range : 16" to 29"
- Production capacity : 140 wheels/hour
- Working air pressure : 6 bars - 90 PSI
- Air consumption : 50 liters/min
- Electrical : 230V - 400 VA
- Sound level : <50 dB
- Weight : 235 Kg
- Size : 0.85 x 1.80 x 1.55m
- CE

OPTIONS

- Integrated or standalone inflating system



BIKEBOTIX Mach1 Machinery



Motorcycle wheel building

MONTAGE DES ROUES DE MOTO

RAM Spoke lacing

V4TM Tightening

MD2M Truing



RAM

LACING MACHINE – MACHINE DE RAYONNAGE



SPECIFICATIONS

- Range : 16" to 21"
- Production capacity : 30 wheels/hour
- Working air pressure : 6 bars - 90 PSI
- Air consumption : 30 liters/min
- Electrical : 230V - 150 VA
- Sound level : <60 dB
- Weight : 30 + 80 Kg
- Size : 2.00 x 1.00 x 1.00m
- Height around 2.20m
- CE

V4TM

4 HEADS TIGHTENING MACHINE - MACHINE DE VISSAGE 4 TÊTES



SPECIFICATIONS

- Range : 16" to 21"
- Production capacity : 80 wheels/hour
- Working air pressure : 6 bars - 90 PSI
- Air consumption : 50 liters/min
- Electrical : 3X400V+N - 4000 VA
- Sound level : <70 dB
- Weight : 1300 Kg
- Size : 3.06 x 2.90 x 2.16m
- CE

OPTIONS

- Safety mat on backside

MD2M

MANUAL TRUING ROBOT - BANC MANUEL DE DÉVOILAGE



SPECIFICATIONS

- Range : 16" to 21"
- Production capacity : 30 - 50 wheels/hour (as per tolerances and operator)
- Working air pressure : 6 bars - 90 PSI
- Air consumption : 5 liters/min
- Electrical : 230V - 400 VA
- Sound level : <50 dB
- Weight : 270 Kg
- Size : 0.90 x 1.20 x 1.70m
- CE

OPTIONS

- Brake discs control by laser sensors



ALLOY RIM PRODUCTION LINE



PF-BU **Profile loading and bending**



PCU **Cutting**



MPPM **Pin Press**



Simple or double Wall

Small batches

APPM2 **Pin Press**



Big batches

DRIM **Drilling**



DRIMA **Drilling**



EFM **EYELET Fitting**

Rim Manufacturing

PF-BU

BENDING UNIT WITH PROFILE FEEDER - UNITÉ DE CINTRAGE AVEC EMBARREUR

SPECIFICATIONS

- Range : 14" to 28"
- Production capacity : + 500 rims/hour
- Working air pressure : 6 bars - 90 PSI
- Air consumption : 5 liters/min
- Electrical : 3 x 400V + N - 1800 VA
- Sound level : <70 dB
- Weight : 350 Kg
- Size : 7.20 x 1.70 x 1.60m
- CE

OPTIONS

- Alloy profiles feeder heating (18 kW)
- 14" conversion kit

PCU

CUTTING MACHINE - MACHINE DE SCIAGE

SPECIFICATIONS

- Range : 16" to 28"
- Production capacity : 380 - 450 rims/hour
- Working air pressure : 6 bars - 90 PSI
- Air consumption : 5 liters/min
- Electrical : 3 x 400V + N - 2500 VA
- Sound level : <70 dB
- Weight : 550 Kg
- Size : 1.10 x 1.75 x 1.70m
- CE

OPTIONS

- Version for 14" to 28"



APPM 2

AUTOMATIC PIN PRESS MACHINE - MACHINE À MANCHONNER AUTOMATIQUE



SPECIFICATIONS

- Range : 20" to 28" simple wall
- Production capacity : 350 - 420 rims/hour
- Working air pressure : 6 bars - 90 PSI
- Air consumption : 10 liters/min
- Electrical : 3 x 400V + N - 3000 VA
- Sound level : <70 dB
- Weight : 350 Kg
- Size : 1.60 x 1.40 x 2.20m
- CE

OPTIONS

- Software for interconnection APPM 2-DRIMA

MPPM

MANUAL PIN PRESS MACHINE - MACHINE À MANCHONNER MANUELLE



SPECIFICATIONS

- Range : 16" to 28"
- Production capacity : 300 - 350 rims/hour
- Air consumption : 2 liters/min (PD option)
- Hydraulic : Adjustable to 70 bars
- Electrical : 3 x 400V + N - 2000 VA
- Sound level : <70 dB
- Weight : 200 Kg
- Size : 0.90 x 0.90 x 1.70m
- CE

OPTIONS

- PD : Semi-automatic pin distributor

DRIM

FLEXIBLE RIM DRILLING MACHINE WITH MANUAL LOADING – PERCEUSE DE JANTES FLEXIBLE À CHARGEMENT MANUEL

SPECIFICATIONS

- Range : 20" to 28"
- Production capacity : 120 – 180 rims/hour (as per number of spoke holes)
- Working air pressure : 6 bars - 90 PSI
- Air consumption : 120 liters/min
- Electrical : 3 x 400V + N - 6000 VA
- Sound level : <70 dB
- Weight : 520 Kg
- Size : 1.65 x 1.85 x 2.10m (only machine)
- CE

OPTIONS

- Range : 14" to 28"



DRIM A

FLEXIBLE RIM DRILLING MACHINE WITH AUTOMATIC LOADING - MACHINE DE PERCAGE DE JANTES FLEXIBLE À CHARGEMENT AUTOMATIQUE

SPECIFICATIONS

- Range : 20" to 28"
- Production capacity : 150 - 180 rims/hour (as per number of spoke holes)
- Working air pressure : 6 bars - 90 PSI
- Air consumption : 120 liters/min (+300l/min rim shaker)
- Electrical connection : 3 x 400V + N - 6000
- Sound level : <70 dB
- Weight : 710 Kg with loading system
- Size : 1.65 x 1.85 x 2.10m (only machine)
- CE

OPTIONS

- Rim de-stacker on entry



EFM

AUTOMATIC EYELET FITTING MACHINE - MACHINE AUTOMATIQUE DE POSE D'ŒILLETS



MAIN FEATURES

- Puts eyelets automatically on a selected type of rim
- Fast rim type selection on touch screen with no mechanical adjustment
- Easy manual rim loading/unloading
- Electric & pneumatic simplicity standard equipment => low maintenance cost
- Instantly production report

Spoke hole zigzag :	-2.5, +2.5mm
Special holes arrangement :	All type supported, 2x2, 4X4, 3X9,
Hole tilt angle :	+3, - 3°
Eyelets loader capacity:	40.000, about 5h production
Number of programmed wheels :	999

SPECIFICATIONS

- Range : 24" to 28"
- Production capacity : 120 - 180 rims/hour (as per rim size and number of holes)
- Working air pressure : 6 bars - 90 PSI
- Air consumption : 100 liters/min
- Electrical connection : 3x400 + N
- Power consumption : 1500 VA
- Sound level : <70 dB
- Weight : 1100 Kg
- Size : 1.00 x 1.40 x 2.35m
- CE

OPTIONS

- Range 20"
- Double eyelets fitting



SAL

SMART AERIAL LINE – LIGNE D'ASSEMBLAGE AÉRIENNE



Thanks to its modular overhead rail system, the Smart Aerial Line (SAL) allows smooth and programmable movement of bikes between workstations without any floor obstruction.

Each station can be precisely positioned to the millimetre and the number of stations is fully configurable, offering a flexible layout for any type of production line.

The SAL ensures operator comfort and efficiency through integrated lighting, low-friction conveyor, and 360° rotating clamps.

Its compact, clear-floor design improves parts delivery and line flow while being fully compatible with Industry 4.0 monitoring and control systems.



MAIN FEATURES

- Modular aerial line specially designed for efficient bike assembly
- Flexible and fast adjustable number of stations (any configurable pitch)
- Spacing between stations fully adjustable (to the millimetre)
- Integrated lighting
- Low friction and low power consumption conveyor
- Smooth and programmable line movement
- Standard clamps with X & Y 360° rotation
- Industry 4.0 compliant

BENEFITS

- Flexible & reconfigurable line
- Clear floor space for easy parts supply
- Easy maintenance with reduced costs thanks to the use of standard commercial components

SPECIFICATIONS

- Electrical : 230 V – 1500 VA up to 40m length
- Sound level : <65 dB
- Weight : 800 Kg per 4m section
- Size : 4.00 x 3.5* x 3.3**m
 - *Adjustable width
 - **Including 0,9m for bike hanger
- CE

OPTIONS

- Clamp with second 360° Y-axis
- Software to control and monitor assembly operations



BAC

BIKE ASSEMBLY CONVOYEUR – CONVOYEUR POUR L'ASSEMBLAGE DES VÉLOS



MAIN FEATURES

- BAC is based on conveyor modules developed by Arcane company in France
- On this conveyor module the bicycle is locked by its seat post tube and can be placed up or upside down
- It can also rotate left and right in a way that any side of the bicycle can be accessed easily
- The bicycle holding arm is not in the middle of the conveyor but shifted to operator aisle, again to improve ergonomics

BENEFITS

- Flexible line layout: The straight line is no longer an imposition and it is thus possible to minimize the footprint and accommodate with constraints of the building

BIKEPRO MOBIL

By ROEMHELD



MAIN FEATURES

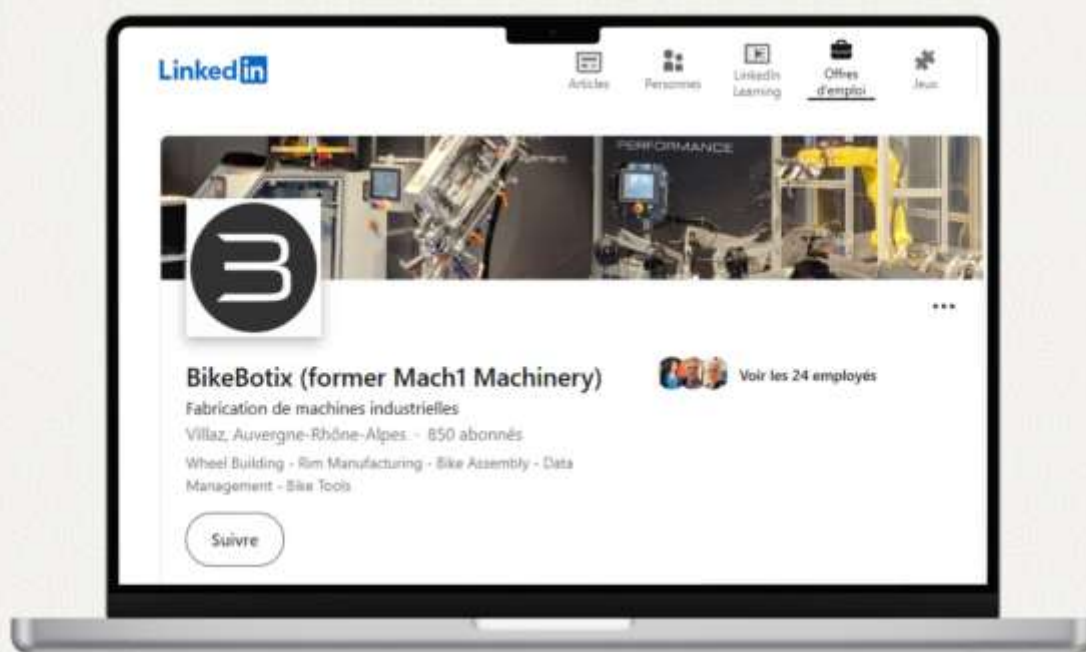
- Suitable for repair and assembly work in workshops or small factories
- Flexible assembly in the production flow
- Bike 360° rotatable with 15° indexings, operated by brake handles
- Universal use due to exchangeable seat tube pin
- Best accessibility due to eccentric positioning of the bike
- Mobile base for greater production flexibility

BENEFITS

- Ergonomic, flexible and efficient assembly of bicycles, cargo bikes and e-bikes



Bikebotix (former Mach1 Machinery)





EzT2

EASY TRUING ROBOT WITH 2 WRENCHES - ROBOT DE DÉVOILAGE SIMPLE À 2 CLÉS



SPECIFICATIONS

- Range : 12" to 29"
- Semi-Automatic changeover
- Production capacity : 25-35 wheels/hour for tightening-stabilization-truing (as per wheel tolerance and operator performance for loading/unloading)
- Working air pressure : 6 bars - 90 PSI
- Air consumption : 5 liters/min
- Electrical : 230 V - 1800 VA
- Sound level : <70 dB
- Weight : 430 Kg
- Size : 1.10 x 1.15 x 1.65m
- CE

OPTIONS

- Electric hub special clamp
- FAT Wheel kit for rim width up to 100mm
- Ethernet connection

MAIN FEATURES

- Integrated system of stabilization
- Manual wheel loading/unloading , no rails before and after
- User-programmable wheel processing in up to 8 steps
- Display actual values for side/side, up/down and offset values by direct measurement on the wheel
- Automatic adjustment to wheel diameter through selection in the wheels list
- Industry 4.0 compliant

BENEFITS

- High efficiency for reduced price
- Easy maintenance with reduced costs thanks to the use of standard commercial components



EZL

VERSATILE MANUAL LACER – MACHINE DE RAYONNAGE MANUEL FLEXIBLE



SPECIFICATIONS

- Range : 12" to 29"
- Production capacity : 15 to 25 wheels/hour depending on wheel spec. and operator
- Working air pressure : 6 bars - 90 PSI
- Air consumption : 30 liters/min
- Electrical : 220 V - 150 VA
- Sound level : <70 dB
- Weight : 65 Kg
- Size : 1.40 x 0.90 x 1.60m
- CE

OPTIONS

- Long-stroke screwdriver for rims up to 80mm

MAIN FEATURES

- Advanced nipple feeder
- Wheel library (>1000) for settings recall
- Suitable for a wide range of rim sizes and diameters, simple and double wall up to 35mm depth
- Electronically controlled screwing depth

BENEFITS

- Balanced wheel spoking for easy unstacking
- Tensioned spoking close to final tension
- Flexible machine : suitable for all wheel types



EZTF

EASY TIRE FITTING FIXTURE - ÉQUIPEMENT DE MONTAGE RAPIDE DE PNEU



MAIN FEATURES

- Simple fixture for manual tire fitting
- No electricity and compressed air required
- Tight-fitting tyres such as tubeless tyres can be fitted to the rim with ease
- Easy to move (on rollers)

SPECIFICATIONS

- Range : 12" to 29"
- Production capacity : 150 wheels/hour
- Electrical : N/A
- Weight : 35 Kg
- Size : 0.90 x 0.80 x 1.20m
- CE

OPTIONS

- Standalone inflating system

STM

SPOKE TYING MACHINE – MACHINE À LIER LES RAYONS



MAIN FEATURES

- Large reel of elastic ties
- Quickly secure spokes

BENEFITS

- Speeds up the use of spoke hubs when lacing the wheel

SPECIFICATIONS

- Range : 16" to 29"
- Production capacity : 200 hubs/hour
- Electrical : 230V - 110 V
- Sound level : <50 dB
- Weight : 33 Kg
- Size : 0.44 x 0.35 x 0.66m
- CE



OMT

DIRECT OFFSET (dish) MEASUREMENT TOOL - OUTIL DE LECTURE DU DÉPORT



MAIN FEATURES

- Lightweight and ergonomic for easy handling

BENEFITS

- Direct digital reading of the offset value

SPECIFICATIONS

- Range : 12" to 29"
- Weight : 1.1 Kg
- Size : 0.70 x 0.40 x 0.07m
- CE

SCT

SPOKE CALIBRATION TOOL – OUTIL DE CALIBRATION DU RAYON



MAIN FEATURES

- It allows to manually measure the tension curve of a spoke for a type tensiometer by applying increasing tension to the spoke

BENEFITS

- Autonomous and easy to use
- Suitable for any type of spoke and tensiometer

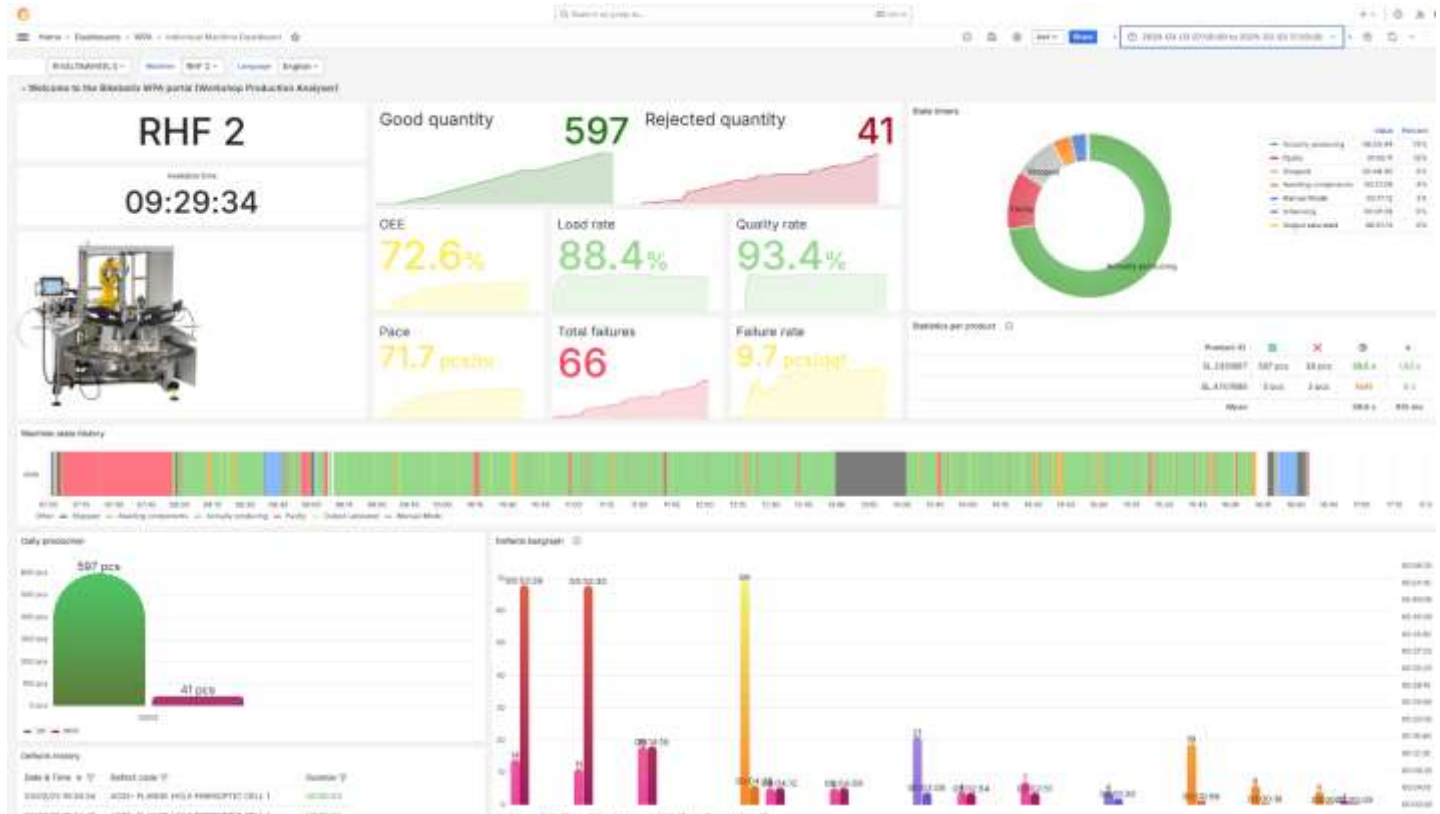
SPECIFICATIONS

- Range : 12" to 29"
- Weight : 5 Kg
- Size : 0.70 x 0.20 x 0.10m
- CE

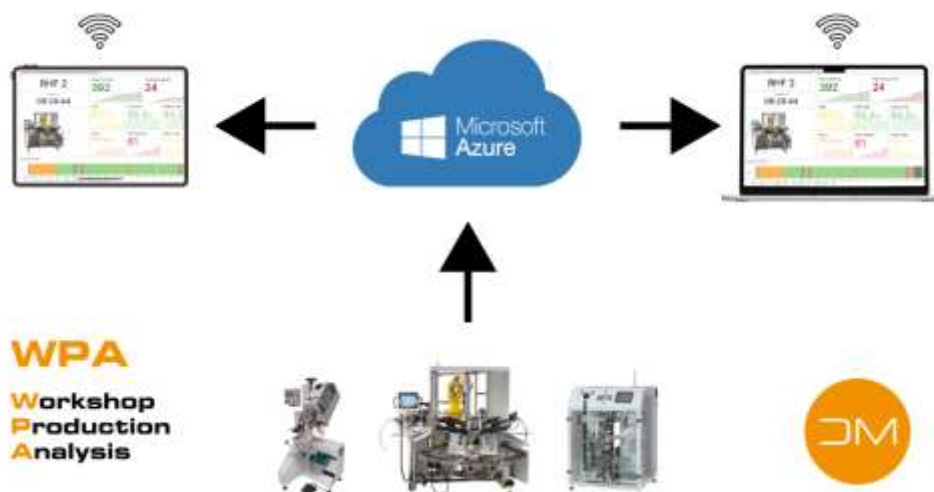


WPA

WORKSHOP PRODUCTION ANALYSIS



WPA is a simple and intuitive production monitoring software designed to improve the efficiency of your workshop. Accessible at any time and from any device, it allows you to analyze your performance in real time.





MAIN FEATURES

- Instant overview of production status through clear and intuitive KPIs.
- Immediate response to anomalies between the machine and WPA.
- Data feedback every 3 seconds over defined time period.
- Detailed history of every product processed by the machine.
- Logging of critical process parameters, including cycle time and part status (OK/NOK).
- Pareto analysis to identify the most frequent defects.
- Calculation of MTBF and MTTR indicators for improved downtime management.
- Weekly PDF reports summarizing production performance.
- Remote access via unique URL from any connected device.
- Easier maintenance and troubleshooting (since Bikebotix technicians have access to WPA, it is much easier for them to understand issues and prepare their interventions).

BENEFITS

- Analyze your performance in real time.
- Users of WPA have reported a 5 to 10% increase in productivity.

INSTALLATION

Deployment is simple compared to an MES, which typically requires several weeks or even months to install. WPA can be set up in just half a day by a technician on existing Bikebotix machines. For new machines, the hardware is installed during manufacturing.



Bikebotix (former Mach1 Machinery)



BIKEBOTIX Mach1 Machinery





Une présence mondiale, un savoir-faire français depuis 1971

*A global presence
French know-how since 1971*





<https://www.bikebotix.com>



Bikebotix

294 route des grands bois

74370 VILLAZ - FRANCE

+33 450 220 639